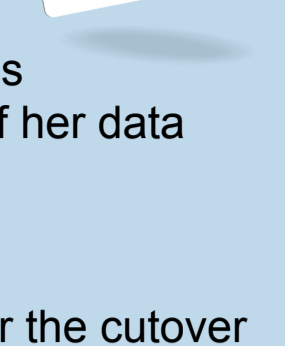


What's Happening?

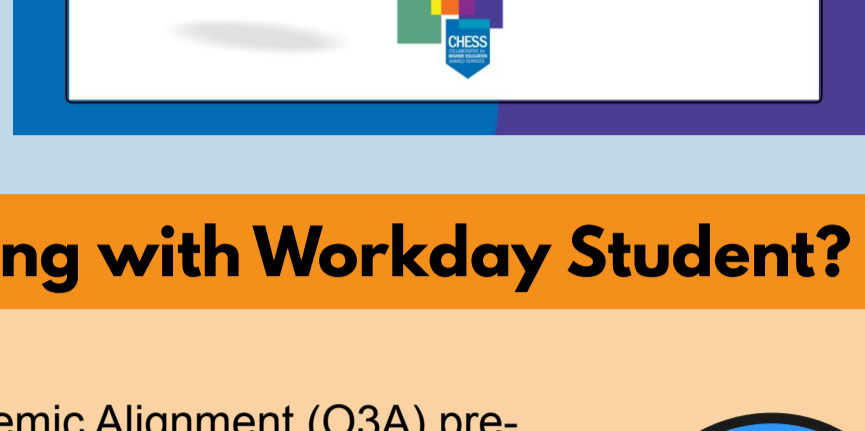
This week, our Implementation Team members are heads-down on three tasks.

- 1) Continued Payroll Parallel testing to ensure that everyone's pay is correct when we go live.
- 2) Updates to the data conversion processes and integrations with legacy systems to ensure that "Susy Jones" and all of her data are attributed to her and not "Jones Susy."
- 3) Review of all of the Cutover tasks and timelines.



Cutover planning is the process of planning and preparing for the cutover from the legacy system (i.e. Jenzabar and Colleague) to the new Workday platform. Cutover planning includes deciding when to cut over, what needs to be done before, during, and after the cutover, and who will do each task. These tasks include the technology changes as well as communications and training. Cutover planning also includes testing the new system to make sure it works as expected.

Click [here](#) to watch a short video on Cutover and Cutover Planning.



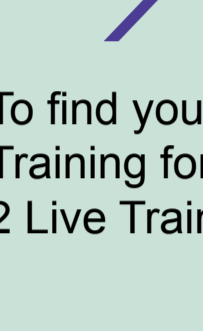
What's Happening with Workday Student?

The Operational and Academic Alignment (O3A) pre-planning activity concludes this week with a wrap-up session on Friday for O3A participants from all six CHESS member colleges. Following that, CHESS PM staff and the Workday team will assess potential alignment options for presentation to CHESS leadership.



The next pre-planning activity, the Deployment Preparation Navigator (DPN), is slated for kickoff the week of November 13. This activity solicits current-state information from the CHESS member colleges from both functional and technical workstreams. DPN output is used to help build the first CHESS Workday Student tenant, the Foundation Tenant. This is an important milestone on our Workday Student journey.

Training Corner



Training for your college's Enterprise Resource System (ERP) in Workday is launching the week of November 13th. Take a look at our training schedule on the [chess.edu](#) website to see when you will begin training for your role.

To find your training(s), use the "Quick Links" for "2023 Wave 2 Live Training for Employees, Faculty, Managers, and Executives," and "Wave 2 Live Training for Finance, HCM, and Payroll".

How does registration work?

The Training Contact at your specific college will be sending you an invitation for your training(s) and how to participate.

Training Contacts:

SJC: Janet Peterson - petersonj@sanjuancollege.edu
LCC: Greg Salazar - gsalazar@luna.edu

We will continue to launch additional training materials each week through Go-Live. Check the [chess.edu](#) website as we add information about the training topics and schedule.



For more, contact your college's Training Team member or CHESS Talent Training & Development Officer Trish Heaton at trish.heaton@chess.edu.

chess.edu - Where it All Lives

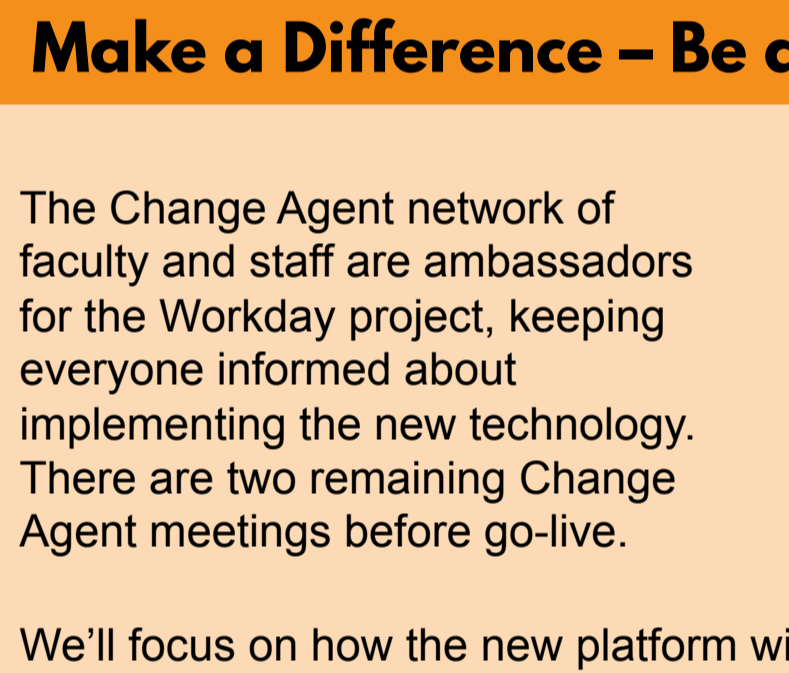
If you:

- Missed an issue of the CHESS Connection
- Want to access timelines and resources
- Are curious about CHESS, Workday, or member colleges
- Want to contact CHESS staff
- Have feedback you'd like to share or questions you want to ask
- Would like to see Q&As from your coworkers
- Want to access a glossary to find the meaning of unfamiliar Workday terms



It is all on the [chess.edu](#) website!

Shout-Out!



Thank you!

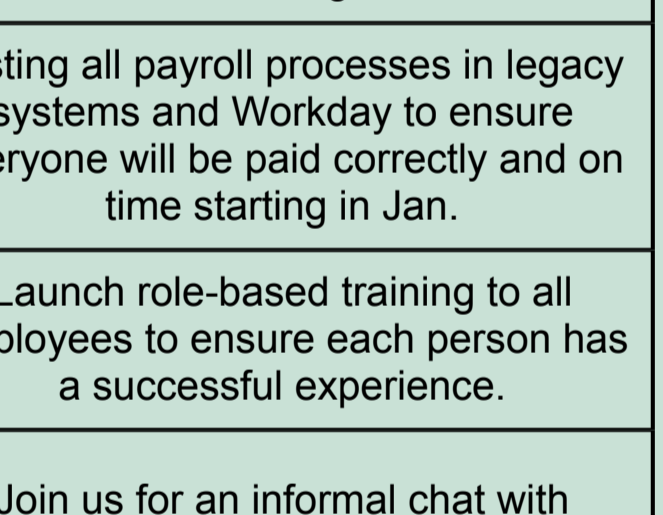
To the LCC & SJC User Readiness Review (URR) team members who participated in URR Training at SFCC on October 11-12.

This team rocks!

Make a Difference – Be a Change Agent

The Change Agent network of faculty and staff are ambassadors for the Workday project, keeping everyone informed about implementing the new technology.

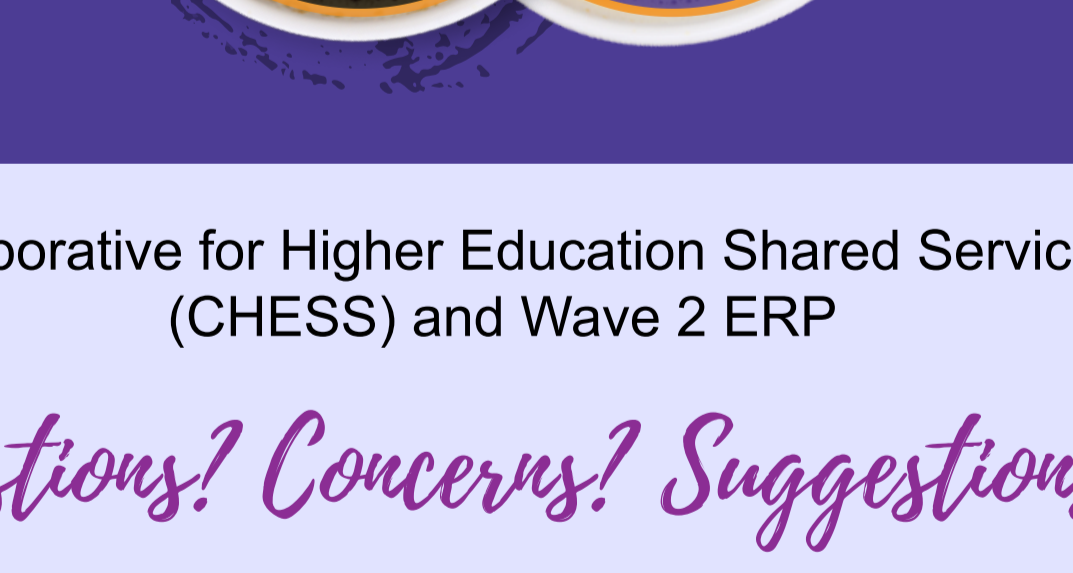
There are two remaining Change Agent meetings before go-live.



We'll focus on how the new platform will impact employees in Human Resources, Finance, Payroll, and Training. To attend the meetings and learn how being a Change Agent connects you to the project and your colleagues, [join the network today](#). Our next meeting is tomorrow, November 2nd at 1pm.

What's Happening?

Nov. 2, 2023 1:00pm	Change Agent Meeting #5	An opportunity for employees to get a sneak peek of the Workday system. This session will focus on Workday Training.
Sept. 18 - Nov. 3, 2023*	Payroll Parallel Testing	Testing all payroll processes in legacy systems and Workday to ensure everyone will be paid correctly and on time starting in Jan.
Nov. 2023-Jan. 2024	Employee Training	Launch role-based training to all employees to ensure each person has a successful experience.
Nov. 28, 2023 10:00am	Coffee with Kathy	Join us for an informal chat with CHESS CEO, Kathy Ulibarri.
Nov. 3 - Dec. 8, 2023	Move to Production	Data and processes will move from various places to their new home in our version of Workday.
Dec. 18, 2023	Go-Live	Workday goes live for all employees for use after winter break.
Dec. 2023 - Feb. 2024	Stabilization Stage	Ensures any bumps from the transition are smoothed out as quickly as possible.
Jan. 2024	Go-Live Celebration	Celebrate all the hard work of our employees. More information to come as the date gets closer.



Collaborative for Higher Education Shared Services (CHESS) and Wave 2 ERP

Questions? Concerns? Suggestions?

Join us for an informal chat with CHESS CEO, Kathy Ulibarri.

Tuesday, November 28th at 10:00am.
Click [here](#) to join.

CHESS Superstars

Superstars are members of the Implementation Team who are recognized based on CHESS Values: Collaboration, Honesty, Equity, Sustainability, and Student Success.

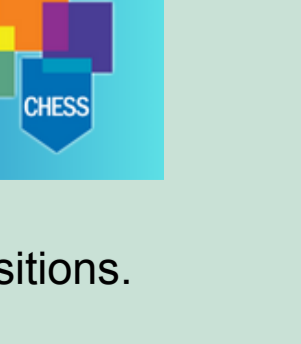


Congratulations!

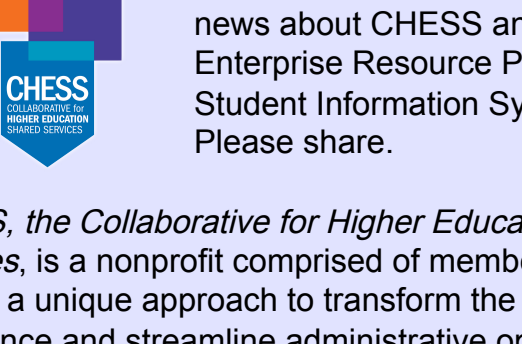
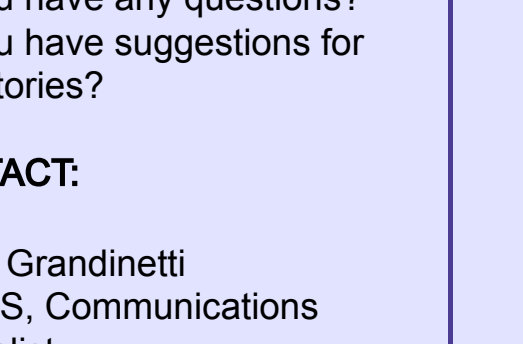
Carolyn Chavez, LCC
Donna Pino, LCC

Feedback

Fill out the online feedback form [HERE](#) to let us know how you think it's going.



CHESS Job Openings



Visit [CHESS.edu](#) for information on these positions.

Contact CHESS

Do you have any questions?
Do you have suggestions for new stories?

CONTACT:

Karen Grandinetti
CHESS, Communications Specialist
karen.grandinetti@chess.edu



The *CHESS Connection* provides news about CHESS and our Workday Enterprise Resource Planning and Student Information System projects. Please share.

CHESS, the Collaborative for Higher Education Shared Services, is a nonprofit comprised of member colleges that employ a unique approach to transform the student experience and streamline administrative operations through state-of-the-art technologies. *Mission: All Together* is the CHESS initiative to launch Workday.