

CHES Connection



October 19, 2023

Workday ERP News: Open Enrollment in Workday is Underway!

- REVIEWED**
 Dental
Delta Dental
- UPDATED**
 Medical
Blue Cross Blue Shield
- Vision**
 Davis Vision

This year, all Wave 1 ERP CHES college employees will utilize the self-service option in Workday for Benefits Open Enrollment. While some requests will require additional supporting documents, many changes will not require any paperwork at all!

As part of Open Enrollment, benefits-eligible employees will have a note in their Workday Inbox titled "Change Benefits for Open Enrollment." Click on the "Let's Get Started" button will take employees to the enrollment screen where current benefits coverages and their costs can be viewed and desired changes can be made.

In support of this year's Open Enrollment Period and other needs, employees can access Tip Sheets on the Training tab at chess.edu.

Visit [CHES.edu](https://chess.edu) for tip sheets available in multiple languages to assist.

What's Happening with SIS (Student)?



Pre-planning work continues **to roll on with** the CHES SIS project. This past week, new project team members from LCC, NNMC and SJC were onboarded in preparation for the Operational and Academic Alignment Assessment activities. The OAAA (or "O3A") sessions are designed to assess process alignment.

During O3A, each institution will take an inventory of current processes to identify which ones are possibilities for alignment with the other colleges. This work will be guided by the CHES Board Visioning Statement and Financial Aid Supplement. For more information, check out these documents on chess.edu.

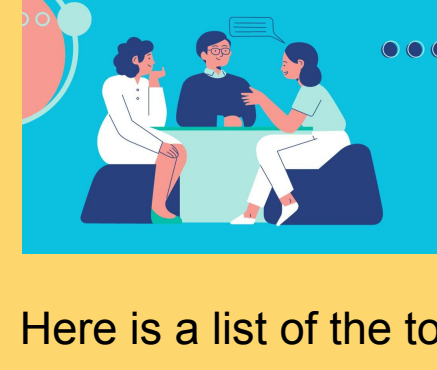
Workday Nuggets: Customizing Your Display Language

Did you know that you can customize your Workday Display Language? Many CHES member college employees' first language is not English. Workday allows users to change their display language.



When in Workday, employees can click on their Profile icon, then select "My Account," then "Change Preferences." The desired language can be updated in the dropdown for "Preferred Display Language." Changing the preferred display language will change the language used for self-service items as well as notifications.

You Asked, We Listened: Reporting (Contd.)



Over the summer, we shared tips for leveraging Workday reports. We are excited to announce that [CHES.edu](https://chess.edu) now has a page dedicated to Workday Reporting. You can find it [here](#). This page is the "go-to" resource for key reports, information for how to access reports, and other useful resources.

Here is a list of the topics covered in our summer series. These are also accessible on this new reporting page.

- Information on available reports
- Available reports based on security role in Workday
- Identifying standard and common reports and how to access them
- Reporting Efficiencies through filters

Did you know...?

Access and support for CHES SharePoint and Teams has transitioned to the CHES Service Desk. If you require assistance, please contact your college help desk to submit a case to CHES, or email service@chess.edu



Workday Support: We Made It!



The Workday Feature Release 2023R2 was successfully implemented on September 9th. Thank you to all the CHES and college staff members that participated in the testing teams! It was a large effort that was truly collaborative! If you have questions about the bi-annual Workday releases, please reach out to the Workday Support Manager at mchavezkerr@chess.edu.

We Want to Hear from You

If you have feedback about the **Workday ERP** (Finance/HR/ Payroll), please fill out the online form [HERE](#) to let us know how you think it's going.

For feedback about **Workday SIS** (Student), fill out the online feedback form [HERE](#) with your thoughts and questions about the upcoming implementation.



Welcome CHES Employees



Corey Childress
CHES Senior Program Manager

With a wealth of project management experience, Corey will oversee the CHES Program Management Office, providing guidance for all CHES-related projects.



Debbie DesJardins
CHES Project Manager

Debbie comes to CHES with experience in higher education and our shared services projects. Among other projects, she will be part of the CHES Workday SIS project team.



Karen Grandinetti
CHES Communications Specialist

Karen has many years of marketing and publications experience and is bringing all that talent to CHES! Look for future CHES Connections and other communications and media to feature her creative flair.

CHES Superstars

Superstars are members of the Implementation Team who are recognized based on CHES Values: Collaboration, Honesty, Equity, Sustainability, and Student Success.

Congratulations to Ben Rollag!
CHES, Workday Support Technical Lead



CHES Job Openings



Visit [CHES.edu](https://chess.edu) for information on these positions.

Contact CHES

Karen Grandinetti, CHES Communications Specialist
karen.grandinetti@chess.edu

The *CHES Connection* provides news about CHES and our Workday Enterprise Resource Planning and Student Information System projects. Please share.

CHES, the Collaborative for Higher Education Shared Services, is a nonprofit comprised of member colleges that employ a unique approach to transform the student experience and streamline administrative operations through state-of-the-art technologies. *Mission: All Together* is the CHES initiative to launch Workday.