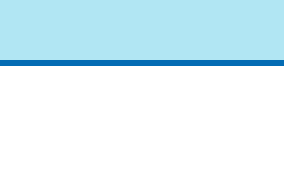
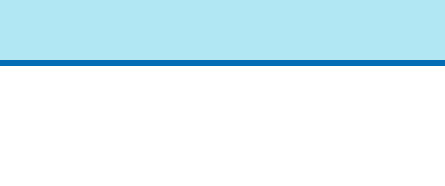
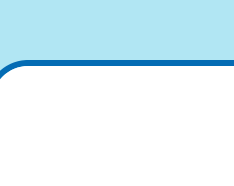


CHES Connection



August 2025, Issue 1

We're Building A Stronger Future For Student Success!

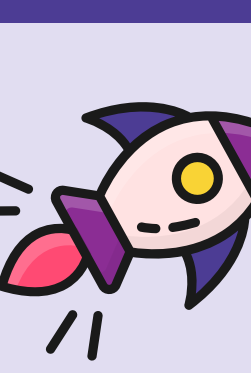
Workday Student is coming – and it will be a game-changer for students and employees at Clovis Community College (CCC), Central NM Community College (CNM), Luna Community College (LCC), San Juan College (SJC), and Santa Fe Community College (SFCC), who are partnering to streamline how we serve students from application to graduation.

With its intuitive design, mobile access, and real-time updates, Workday Student makes tasks like registration, course planning, and academic progress tracking faster and easier.

Academic planning will get a major upgrade. Students can map out their entire degree path, term by term, with smart tools that flag missing requirements and suggest available courses.

Advisors and staff will benefit from more accurate data and fewer manual processes – saving time and boosting support.

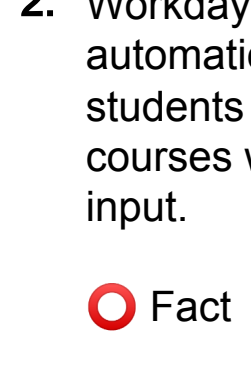
Workday Student offers a streamlined, user-friendly experience for accessing student information, making it easier than ever to get the data you need without jumping through hoops. Instead of a series of screens and forms devoted to one specific data point each, Workday consolidates data from multiple sources onto a single, comprehensive view.



According to Curriculum Management / Academic Advising Implementation Team Member Zac Shank from CNM,

“You can also use plain language to search instead of memorizing system jargon: Just type something like “Find Students” into the main navigation bar, and Workday will give you a searchable list of students. Another major advantage is that reporting tools are built right into the platform. You don’t need to export data into separate programs or wait on others to generate reports. You’ll have the power to access, analyze, and use data all in one place.”

Fact or Fiction? — The Workday Student Edition



A fun activity for you as we prepare to launch Workday Student!

Instructions

Each of these statements describes a possible fact in Workday Student. Some are fact, some are fiction (but maybe fun ideas for future updates!). Select an answer for each one, then check the answer key at the bottom of this issue.

- Students can drag and drop courses into a schedule and see time conflicts live.
 - Fact
 - Fiction
- Workday Student will automatically enroll students in required courses without their input.
 - Fact
 - Fiction
- Faculty can use Workday to track attendance and send early alerts.
 - Fact
 - Fiction
- Students can submit TikTok-style video petitions for late registration.
 - Fact
 - Fiction
- Academic plans will update in real time based on completed courses.
 - Fact
 - Fiction
- Workday sends push notifications when your GPA drops below 2.0.
 - Fact
 - Fiction

Workday Release Update (2025R2)

ESS

(ENTERPRISE SYSTEMS & SUPPORT)

IMPORTANT UPCOMING RELEASE NEWS

ESS will be reviewing and testing over 400 new items! The current release cycle begins on August 16th (ESS Testing) and will be live on September 20, 2025.

One update, for all employees to be aware of, is for the Workday Absence Calendar (Includes Absence & Leave Requests)

Workday is changing the Absence Calendar experience. These updates are being tested by the CHES ESS Team now and will be live in Workday for the September release.

Here are some of the exciting updates!

- Fewer Clicks:** Enjoy quicker access to your absence calendar and interactive balance details, minimizing the navigation needed to stay informed.
- Flexible View Options:** Toggle between different request views, such as calendar and list formats, allowing you to visualize your absence information in the way that best suits you.
- Integrated Actions:** Access essential absence tasks directly within the calendar via an “Actions” dropdown. This includes the ability to “Select Date Range” for requests and initiate a “Request Return from Leave of Absence” without navigating to separate pages.
- Real-time Balance Insights:** When submitting a new absence request, you’ll now see both the “Available Balance” and the “Remaining Balance” dynamically calculated. This provides immediate clarity on how your request will impact your time off balances.
- Convenient Micro Calendar:** A new “Request Absence” micro calendar is accessible by search, allowing users to initiate time off requests without leaving their current page.

More details to come in the next issue of the CHES Connection. Self-paced training will be available through Workday Learning or by contacting your specific College Training Team Member.

CHES Superstars

Congratulations to Our Newest CHES Superstar!



Vanessa's nomination came from Antoinette Barela with CHES. Antoinette wrote:

“I would like to nominate Vanessa Au from Workday as a CHES Superstar for her exceptional collaboration and support throughout the Student Success testing efforts. Vanessa consistently brought valuable expertise to the table and went above and beyond by creating insightful dashboards that helped streamline testing across each Sprint. Her proactive approach greatly contributed to our overall progress and success.”

CHES Superstars are individuals on project implementation teams, member college employees, or CHES employees, who are recognized based on the CHES Values of Collaboration, Honesty, Equity, Sustainability, and Student Success.

Join Us for CHES CHAT with Shaun McAlmont , CHES CEO

CHAT
Come, Hear, Ask, Talk

Meet Shaun McAlmont, CEO

Welcome to CHES CHAT

Have Your Lunch During this Casual Session

Email any specific questions or topics you'd like to discuss to info@ches.edu ahead of time!

Enjoy the Fresh, New Format

New Day & Time So You Can Attend

Come chat with CHES and get the real scoop right from the source.

Use the button below to join the live session on **Wednesday, September 3, 2025, at 12 Noon (Mountain Time)**

[Click Here to Join CHES CHAT on Wednesday, September 3, 2025](#)

Do you have a topic or question for CHES that you'd like to discuss during CHES CHAT? Send it before the session to info@ches.edu

CHES Job Openings

Now Hiring

- ESS Payroll / TTab Lead
- Testing Coordinator
- Financial Aid Verification & Processing Specialist

Join our team and make a difference—now hiring!

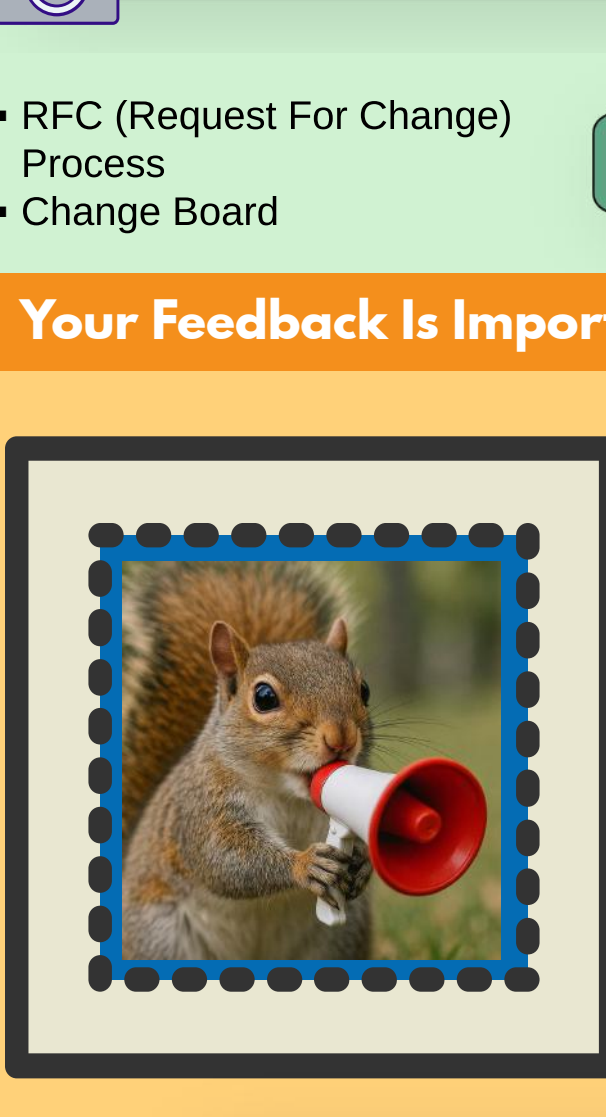
[View our open positions at ches.edu](#)

Quick Access to the Technology Support Hub

The **Technology Support Hub** is located within the Member Hub on the CHES website. The pull-down menus will quickly get you to the right information. Use the buttons below to get the information you need most!

- SERVICE REQUEST HUB**
 - Create a New Service Request Ticket
 - Follow Up on a Service Request
- TENANT INFORMATION HUB**
 - Top Reports by Functional Area
 - Reporting Tips & Tricks
- REPORTING HUB**
 - RFC (Request For Change) Process
 - Change Board
- RFC (REQUEST FOR CHANGE) PROCESS**

Your Feedback Is Important!



We want to hear from you—yes, you!

Whether you've got brilliant ideas, helpful suggestions, or just want to give CHESSTER the Squirrel a virtual high-five, this is your chance to speak up. Your feedback helps us make CHES even better for everyone. So go nuts and drop us a line—CHESSTER'S all ears (and tail)!

[CLICK HERE TO LEAVE FEEDBACK](#)

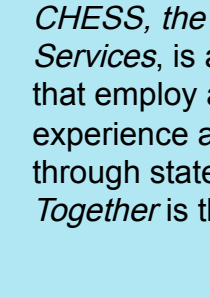
Fact or Fiction Answer Key – How'd You Do?

- Fact** – Workday Student lets students drag and drop classes into a personalized schedule, with live time conflict alerts.
- Fiction** – Registration remains in student hands. No auto-enrollment here.
- Fact** – Faculty tools include attendance tracking and early alerts (if configured by your campus).
- Fiction** – No TikTok petitions... though that might be a wild future enhancement!
- Fact** – As students complete classes, their academic plans update in real time.
- Fiction** – No GPA alerts yet... but it's a fun idea to file for later.

Contact CHES

Do you have any questions? Do you have suggestions for new stories?

CONTACT:
Karen Grandinetti
CHES Communications
karen.grandinetti@ches.edu



The *CHES Connection* provides news about CHES and our Workday Enterprise Resource Planning and Student Information System projects. Please feel free to share.

CHES, the Collaborative for Higher Education Shared Services, is a nonprofit comprised of member colleges that employ a unique approach to transform the student experience and streamline administrative operations through state-of-the-art technologies. Mission: All Together is the CHES initiative to launch Workday.